

Love of life begins with "Rcom"

INSECT 70

Ver. 1.0

DIGITAL INSECT INCUBATOR USER'S MANUAL INSECT MAX 70



Contents


INSECT 70



How to Use Rcom Insect MAX 70

1. Introduction	
(1) Rcom Insect 70 Introduction	3 ~ 7
(2) Safety Precautions	
(3) Identification of Parts and Composition	
(4) Name & Function of Operation Parts	
2. Before use	
(1) What's an Incubation Room?	8 ~ 13
(2) How to Assemble Main Body	
(3) APS Assembly / Speed Control / Tube Replacement/ Storage and Cleaning	
(4) Humidity & Air Maintenance During Incubation / Dew Condensation	
3. Incubation	
(1) Incubator Installation	14 ~ 16
(2) Incubation start / Incubation Termination	
4. Function Settings	
(1) Incubator Initialization / Return to Factory Setting	16 ~ 19
(2) Temperature & Humidity Setting / How to Set Abnormal High & Low Temp. Alarm	
(3) How to change Centigrade & Fahrenheit / Work Automatic Pumping System by Force	
5. Management	
(1) How to Disassemble and Clean the Incubator	20 ~ 21
6. Product Information	
(1) How to Replace the Fuse	22 ~ 24
(2) Troubleshooting	
(3) Specification	

Introduction
Before use
Incubation
Function Settings
Management
Product Information

 **Successful hatching depends on many numbers of factors. Neither Autoelex (Rcom) nor its global distributors and vendors can be held responsible for loss of life or property damage caused by user neglect, alteration, modification or painting, change of use or power failure. To avoid errors, mishaps and danger, carefully check this User Manual before initial use. Also please check the manual regularly to ensure your operation of the machine is correct.**

Mark Explanation



Caution : Caution mark against a fault that can cause damage, trouble, or failure of incubation.



Prohibited.



It is necessary to keep.



Do not disassemble.



Remove the power cord from outlet.



Do not touch.



Ground Connection for preventing electric shock.



Tip : References or useful suggestions in using Rcom product



Warning of actions which may be dangerous or cause damage to the incubator.

Rcom Insect 70

First of all, we would like to express our deep appreciation for all the customers who purchased Rcom Insect Incubator. Rcom Insect Incubator was designed to be used easily and conveniently by the newest digital control method for controlling optimal incubation environment automatically, however, in order to get the best incubation result, at first, it is very important for users to have some incubation knowledge and right machine operation method. Therefore, before suing incubator, be sure to read instruction manual. Rcom Insect Incubator provides the best incubation environment, however, it is necessary for users to observe and adjust each environment necessary for incubation including egg kind, temperature and humidity management by incubation date, surrounding conditions of incubator, and this product was made it possible to make the best setting for all the environments necessary for incubation.

Features of Rcom Insect 70

[Main Features]

- * Luxury design with streamlined egg shaped concept
- * Automatic Temperature&Humidity setting and control
- * Artificial intelligence electronic control device to automatically adjust the cycle of incubator according to the ambient conditions
- * Convenient humidifier with Automatic Pumping System (A.P.S)
- * Clear and transparent large view-window
- * Minimizing the parasitic bacteria by not using any interior material and using revolutionary hygienicduplicated insulation structure (bottom tray)
- * Variable air control lever to control air amount inside the incubator
- * Applying Rcom's optimum air flow technology to avoid the fan's air from directly touching egg
- * Enhanced reliability by applying Swiss's Sensirion's 3rd generation temperature & humidity sensor

[Easy Features]

- * Degree C / degree F interchangeable
- * Alarm and indicator function for abnormal high or low temperature by drastic and unusual outer temperature change
- * Incubation data memory function and power outage notification function in case of power outage
- * Closed structure to avoid waterdrops (condensation) on the view window from leaking out of incubator
- * Rotating heater support which conveniently controls the tension of the heater
- * Application of Water Nipple to supply water easily for humidification
- * Automatic humidification function for minimum 2 minutes (Press + button for 10 sec.)
- * Automatic Humidification Pumping System, and precise Speed Regulator VR to control the amount of pumping
- * Air Vent Holes for inflow of fresh air from outside to inside by affecting the heat insulation to the minimum
- * Not required to have a balance weight with the optimized incubator design considering the centroid of incubator's top and bottom when eggs are placed
- * The Automatic Pumping System (APS) for accurate humidification, as a pump of silicone tube, is structured to make tube changed with easy and durable by installing mini roller on the four areas with friction

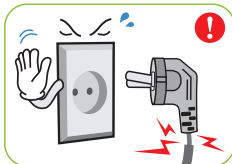
1. Introduction

(2) Safety Precautions

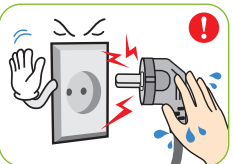
INSECT 70

Electrical hazards

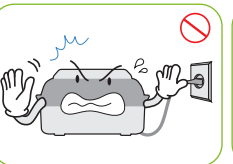
CAUTION Be careful the details below when you use.



Do not use a damaged power cord or loose outlet.
▶ Risk of electric shock or fire.



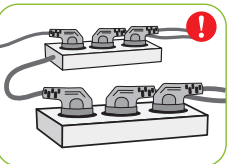
Do not pull the cord when taking out the power cord, and keep wet hands away from connecting plug.
▶ Risk of electric shock or fire.



Never pull the plug out of the outlet during the incubation period.
▶ Incubation will be interrupted.



Do not twist or crush electric cord.
▶ Risk of electric shock or fire.



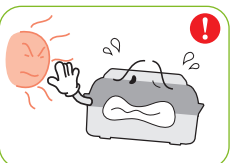
Do not insert multiple connecting plugs in an outlet.
▶ Risk of fire or electrical overload.

Setting Cautions

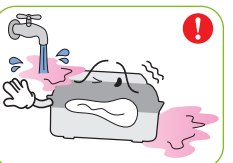
CAUTION Be careful the details below when you use.



Do not install in dusty or dirty environment.
▶ Risk of damage or fire within the incubator.



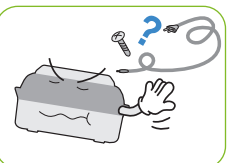
Do not install under the direct sunlight.
▶ Risk of fire or interference with the incubation process.



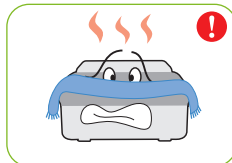
Do not install in moist or humid environment.
▶ Risk of fire or electric shock.



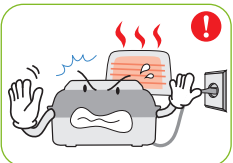
Do not install in excessively cold or hot conditions, cigarette smoke, etc.
▶ Risk of interference with the incubation process.



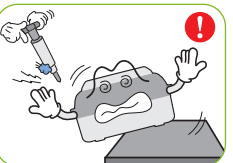
Do not use any other non-standard parts except those provided.
▶ Risk of damage or hatching failure.



Do not cover the ventilating opening.
▶ Inner temperature can rise, interrupting incubation.



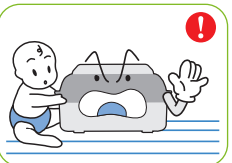
Install away from heat sources.
▶ Risk of damage to the incubator case and interference with the incubation process.



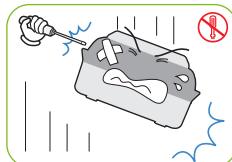
Ensure that the incubator is installed on a stable surface away from edges.
▶ Risk of damage to incubator and eggs and user from accidental knocks or drops.



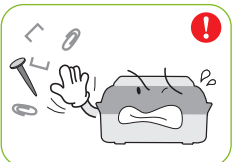
Do not turn the incubator upside down.
▶ Water will pour out of the incubator, and view window can be dropped or damaged.



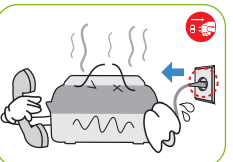
Children should be supervised to ensure that they do not play with the appliance.
▶ Risk of knocking the incubator or accidental interference with the controls.



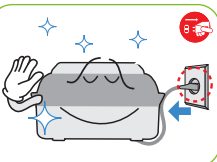
Do not disassemble or modify the incubator in any way.
▶ Risk if electric shock or fire.



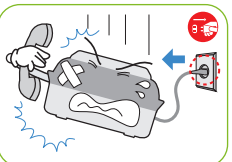
Please ensure that no small objects get into the holes on the incubator.
▶ Risk of electric shock or fire.



If the incubator sounds strange or emits smoke contact your service center.
▶ Risk of electric shock or fire.



Clean the incubator thoroughly before storing.



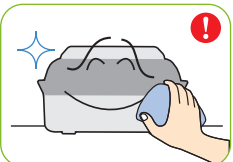
If the incubator requires repair disconnect from the power supply and please contact to your service center.

Cleaning Cautions

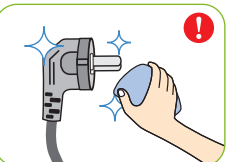
CAUTION Be sure to disconnect the electric cord from the outlet before cleaning.



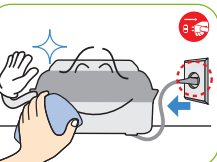
Do not spray cleanser directly on the incubator surface.



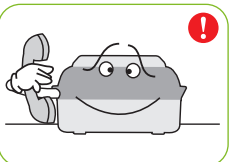
Clean the incubator by a soft cloth with a neutral detergent.



Brush away dust on the plug with a dry cloth.

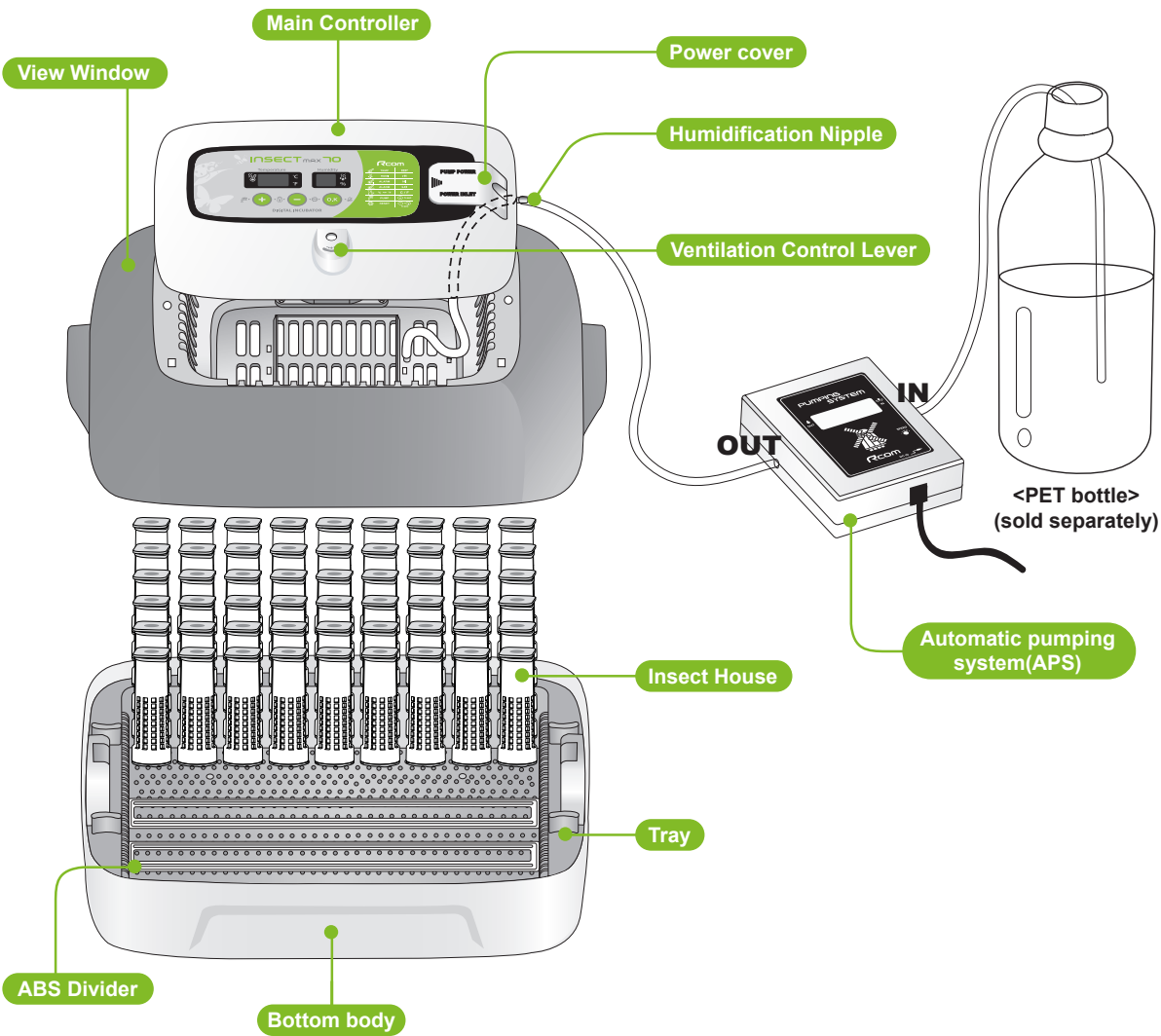


Do not use chemicals like wax, benzene, alcohol, thinner, aromatic, or lubricant, etc.



For special cleaning of inner part per year, contact to the service center.
▶ If you don't clean the inside of incubator for a long time, dust can cause some trouble or a fire.

Identification of Parts



1. Introduction

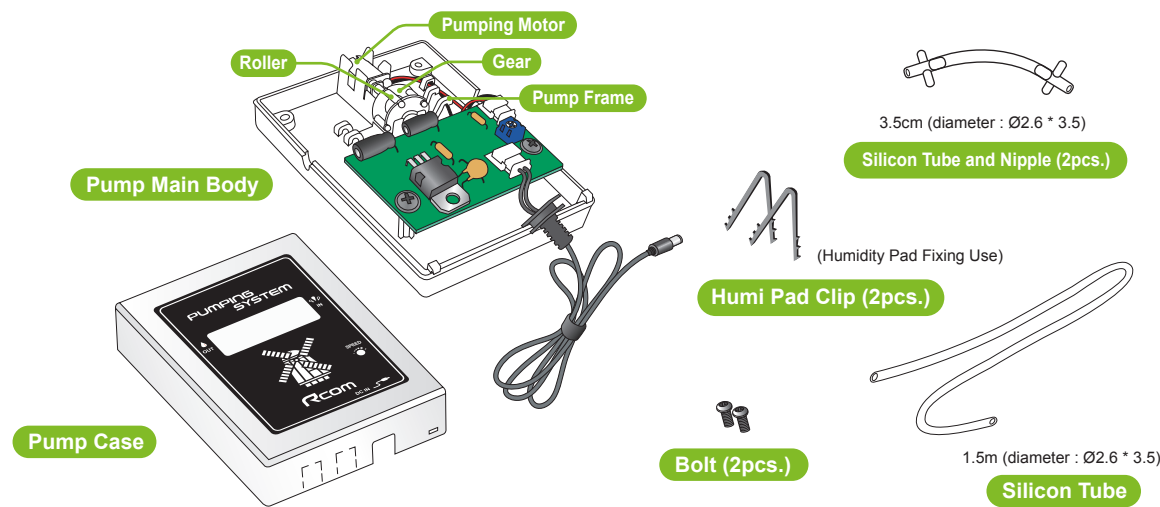
(3) Identification of Parts
and Composition

INSECT 70

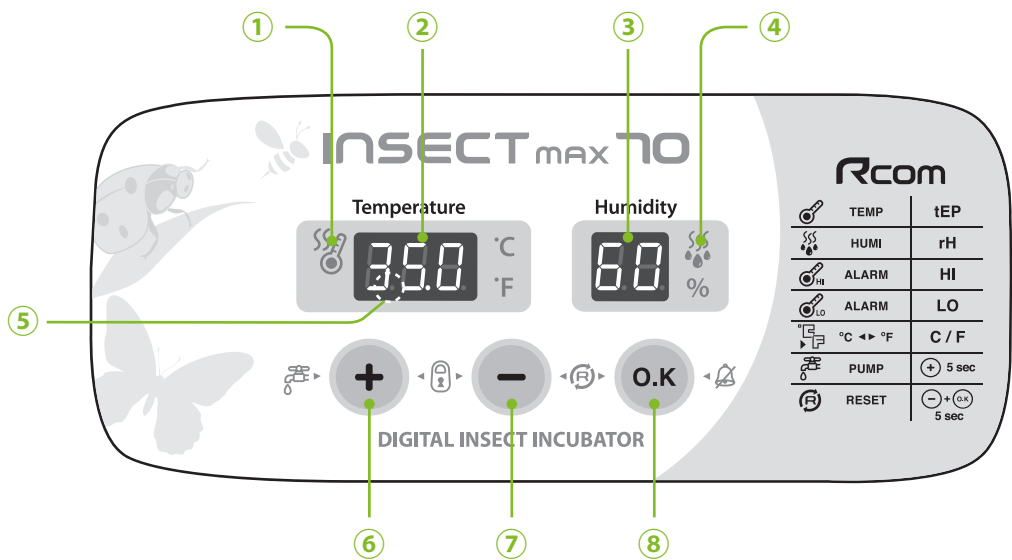
Basic Components



APS Components



Name & Function of Operation Parts



● Names and components of each part

- ① **Heater Operation Lamp**
: Light on when working

② **Temp. Display**
: Current Temperature Display

③ **Humidity Display**
: Current Humidity Display

④ **Pumping System Operation Lamp**
: Light on when working

⑤ **Power Failure Alarm Function (FND light)**
: Light on when power failure (Cancel Button : OK)

⑥ **Up Button**
: Setting Temp. & Humidity UP

⑦ **Down Button**
: Setting Temp. & Humidity DOWN

⑧ **Menu Selecting Button**
: Setting Value check

 Insect MAX 70 is available to automatic humidity raise only, if you want to control low humidity level, please adjust "Air Controlling Lever" by manual [refer to page 13]

	Setting Mode: Press two buttons at the same time to go to Setting Mode.
	Select Menu / Quick Movement / Cancellation / Setting value check during incubation
	Value + / APS is forced to operate if press 5sec. / APS is forced to operate for 2min. if press 10sec.
	Value - / Factory Initialization

● **Function Key** Press buttons at the same time to go to setting mode.

Function	Temp.	Humidity	Abnormal high temp. alarm	Abnormal low temp. alarm	Centigrade / Fahrenheit
Display	tEP	rH	HI	LO	°C / °F
Default Setting	35.0°C	60%	2°C	-3°C	°C

2. Before use

(1) What is an incubation Room?
(2) How to Assemble

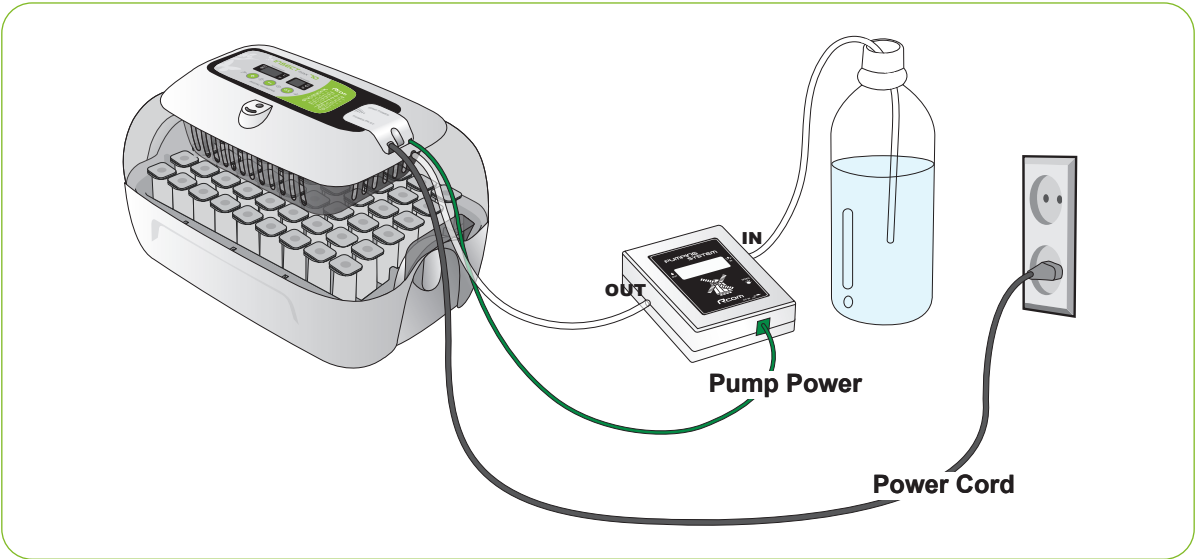
INSECT 70

What is an Incubation Room?

Incubation room? It means the place where the incubator is installed and operated, and as it has much effect on incubation rate according to the environment of incubation room, it is good to install incubator at the place where there is little noise and vibration in the vicinity and the temperature range isn't severe in the temperature of 22~25°C (71.6~77°F). In particular, as there are many cases that the temperature falls rapidly in the nighttime differently from the daytime, it is necessary to check certainly, and during daytime, incubator must not be exposed directly to the sunlight.

⚠ When the temperature of incubation room is lower than, recommended setting temperature there could be water-droplets in side of incubation room or water leak on the floor. because of dew condensation.

How to Assemble

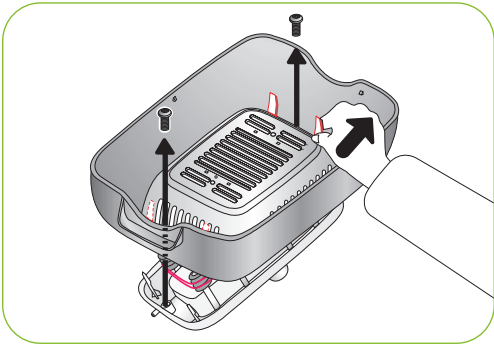


[How to Assemble Main Body]

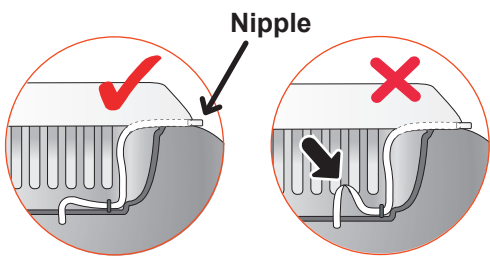
- ▶ Please remove all packing from the incubator and parts. Then, check each part is present and undamaged. (Please keep the carton and packing materials for repacking to retain the incubator in good condition when not using.)
- ▶ (EX:RCM0000000) If you register your information with your machine's serial number on our web-site(www.Rcom.co.kr), you can get 2 year warranty service. [Refer to the page 24]



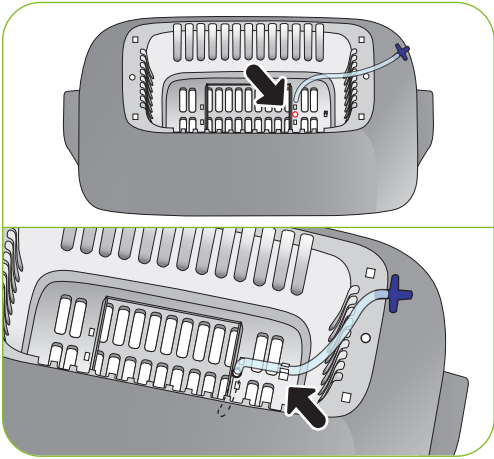
- ▶ Loose two bolts connecting main controller and view window. After that, disassemble main controller from view window by pulling 4 hooks on main controller.



- ▶ Fix silicone tube which is assembled with nipple into the hole.

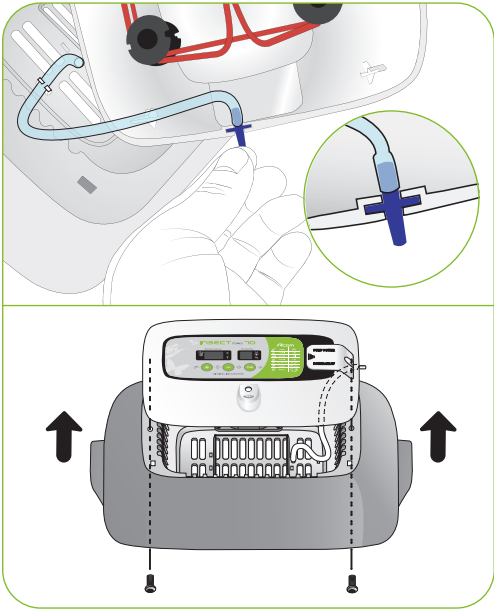


⚠ Be careful to ensure the silicone tube is not folded.



- ▶ Insert the nipple which is connected with view window to the hole of main controller, and assemble view window and main controller with two bolts.

⚠ Do not tighten the bolts too much.

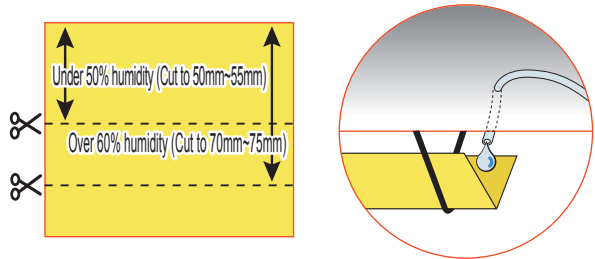


2. Before use

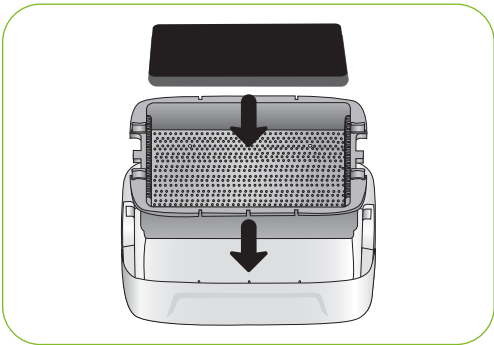
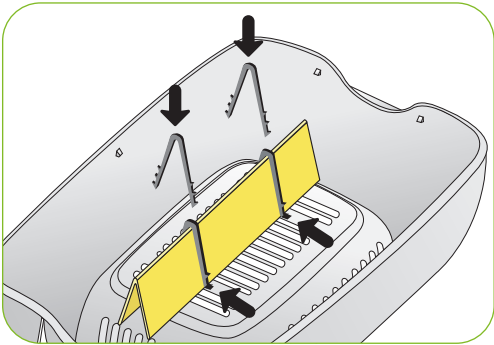
(2) How to Assemble Main Body

INSECT 70

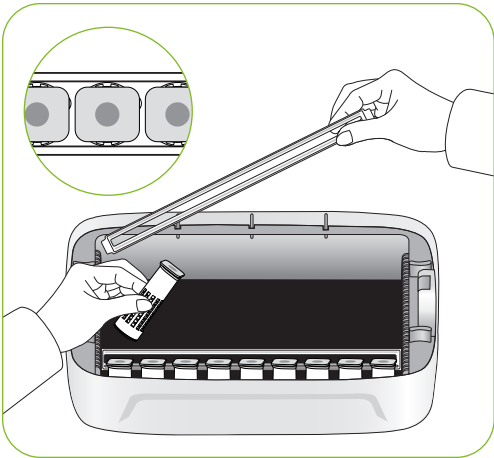
- ▶ Cut Humidity pad to proper size, and then fix on the view window with 2 pins included.



- ⚠ Evaporating ability is different from pad size.
- ※ You can use Humidity pad for about 4 ~ 6 months, but it can be different depending on water quality. (DISTILLED WATER is recommended to use.)
- ※ Humidity pad can be purchased separately.
- ▶ Assemble bottom body, Tray, and Tray hatching pad.

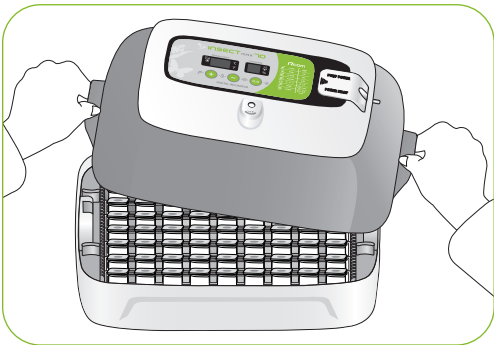


- ▶ Prepare the Insect House egg contained.
- ▶ Place Insect house by adjusting tray divider.

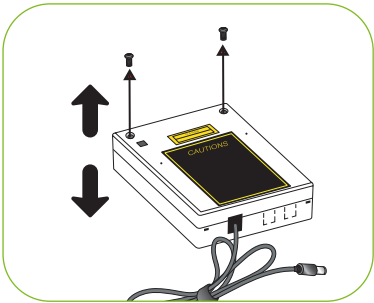


- ▶ Please close the view window.

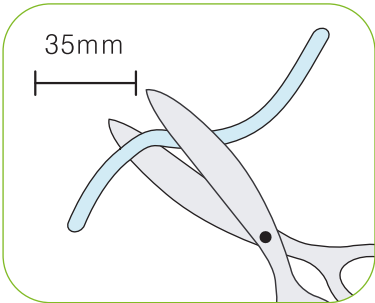
- ⚠ In case that the sight glass isn't closed completely, temperature doesn't go up. Be careful.
- ⚠ Test the incubator to be sure that the incubator works without any problem before placing eggs in the incubator. Please ensure you remember how to use the machine and maybe re-read instructions.



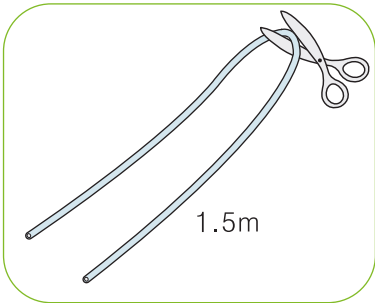
How to Assemble APS (Automatic Pumping System)



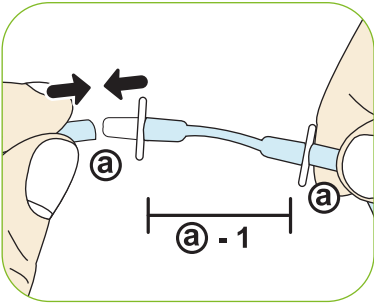
[Pic.1-0]



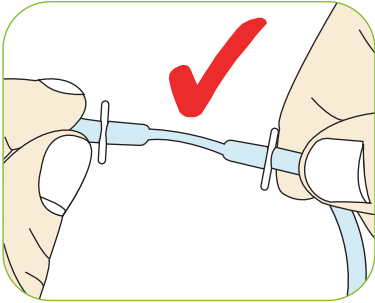
* Is not required with first use



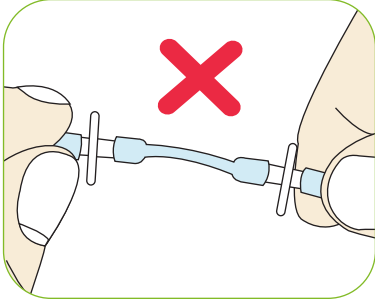
[Pic.1-1]



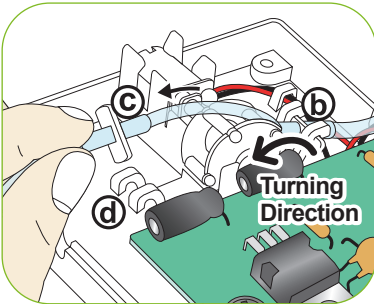
[Pic.1-2]



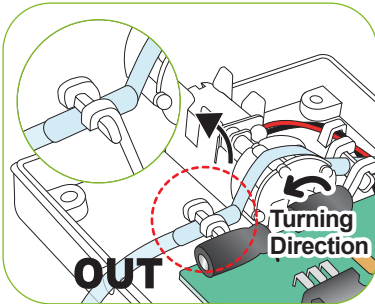
[Pic.1-3]



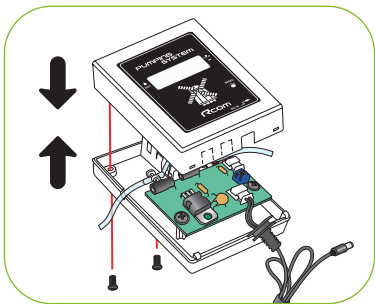
[Pic.1-4]



[Pic.1-5]



OUT



[Pic.1-6]

- ① Cut the silicone tube exactly to 35mm, and insert to nipple as picture 1-2.
(When you purchase, product is originally assembled as (a)-1.)
- ② Cut the silicone tube of 1.5m to half, and insert to assembled nipple (a).
- ③ It is normal if you assembled as pic.1-3. If you do not insert silicon tube to the nipple completely as pic.1-4, pumping will not work well.
- ④ Loose two bolts of APS case as picture 1-0, and insert the assembled silicone tube and nipple as pic.1-3 to the side of pic. 1-5 (b).
- ⑤ Grip the part (c) on Pic.1-5, and pull the silicone tube so that fit to (d).
(If silicon tube should be assembled tightly.)
- ⑥ Spread IN and OUT of tube so that the silicone tube is not tangled. Insert tube on the groove, and cover the case. Here, be sure to check the silicone tube or wire is not jammed. Refer to the Pic.1-6.

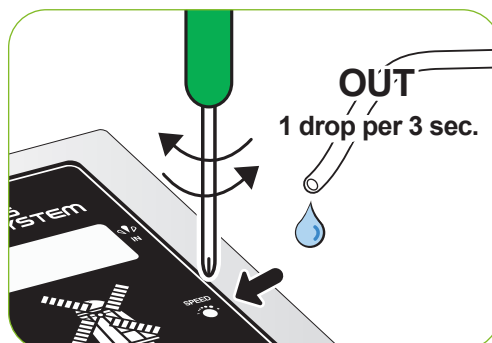
2. Before use

(3) APS Assembly / Speed Control /
Tube Replacement/ Storage and Cleaning

INSECT 70

How to Control Water Flow Speed in APS

- ▶ The amount of water for humidification can be easily controlled with APS.
- ▶ With cross type screw driver, turn "Speed" clockwise to increase water flow and vice versa to decrease.
- ▶ To prevent water over flowing and dropping down in to the chamber, it is recommended to use the APS with lowest water flow speed. (1 drop of water in 3 sec.)



Humidity will raise up very slowly as artificial intelligence function check and memorize ambient conditions to keep incubator inside with optimum conditions.

How to Replace the Tube

- ▶ If the silicone tube wear out and it does not pump water effectively, you should replace silicone tube. [Refer to the page 13]



Be sure to use the silicon tube supplied from Autoelex(Rcom). (Ø2.6 × 3.5)



If water does not flow out even if pumping motor is working, check if silicon tube is blocked or folded.

※ If it failed in pumping water, check direction of IN and OUT again, and also check if motor is turning with anti-clockwise. Also, length of silicon tube should be 35mm and inserted correctly. [Refer to the page 13]


Storage and Cleaning

- ▶ Do not wash APS with water but wipe with soft cloth.
- ▶ In case of long time storage, detach the silicon tube from the APS and remove the water from the tube. Keep the tube unkinked. It stops the tube hole from blocking.
- ▶ When assembling again, stretch the tube to open the hole in case the tube is blocked.

Humidity & Air Maintenance During Incubation

► When hatching, it's recommended not to open the lid often. If you open the lid often humidity will be rapidly decreased and it will take a long time to regain the proper humidity.

※ Air Controlling Lever : Outer fresh air can be flowed into incubator inside without affecting insulation. When eggs start hatching, open air controlling lever either fully or half-open.

 Check water level every three days during incubation, and refill when needed. You'd better to use tap water than purified water or underground water for avoiding evaporating pad damage. (Evaporating pad is available from Autoelex Co.,Ltd. or Rcom distributors.)

※ Evaporating pad is expendables.



Dew Condensation

► This is a naturally occurring phenomenon when there is a significant difference in temperature between inside and outside of the incubator during incubation period. If this occurs, water may form in inside bottom of the incubator(bottom part).

 Do not place any goods near the incubator.



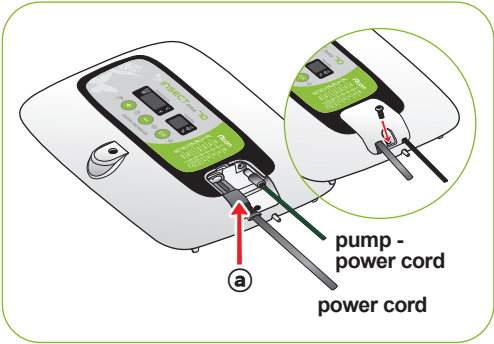
Incubator Installation

⚠ Test the incubator to be sure that the incubator works without any problem before placing eggs in the incubator. Please ensure you remember how to use the machine and maybe re-read instructions.

► Open the power cap, and insert the incubator power cord and pump power cord.

⚠ Be careful to ensure the cords do not get jammed when you tighten screw bolt.

⚠ If you open power cap, there is a sticker which is showing rated current in the position of pic.Ⓐ.

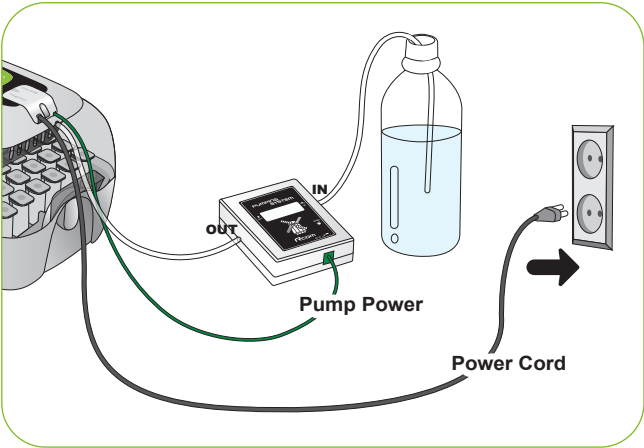


► Connect silicon tube end of APS (Automatic Pumping System) into the nipple of incubator, and the other end into PET bottle.

► Be sure to check rated current Pic.Ⓐ before connecting power cord to outlet.

► Press **+** button for about 10 sec. for pump operation, and it automatically stop after 2min. If you want to stop pump operation, press any key.

⚠ If you do not insert silicon tube exactly, it will not work properly. [Refer to the page 11. How to replace silicon tube.]



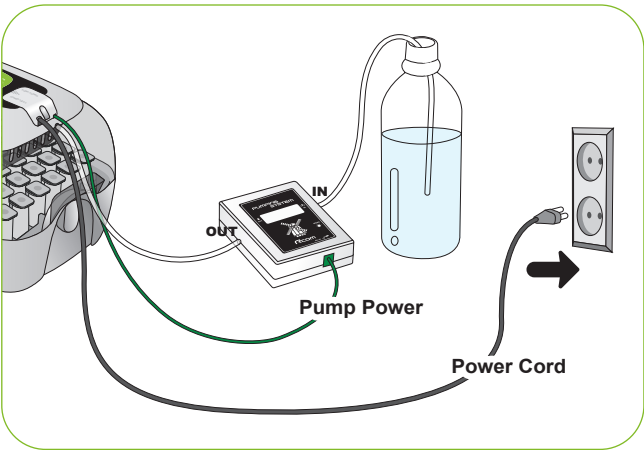
How to Start Incubation

- ▶ If you connect power cord, incubator starts incubation with factory set conditions.
[Factory setting : Temperature 35.0°C (95°F), Humidity RH 60%]

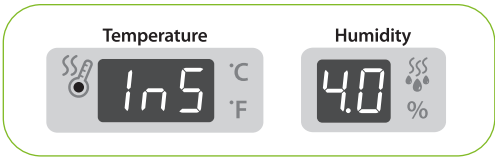
※ Start incubation with required temperature & humidity for your species of birds.



There can be some odor the first time you use incubator, which is normal.



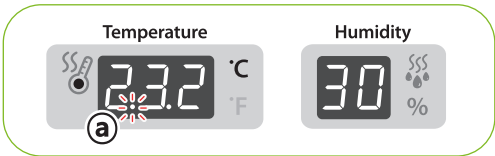
- ▶ The first time you connect power, FND light will blink and pump will work for about 2sec. Then, incubator version will be indicated on FND for about 1 sec.
- ▶ After version indication, buzzer sounds for about 15sec. At the same time, present temp. & humidity displayed and power failure alarm indication (a) is blinking.
- ▶ Press (O.K) button to remove buzzer and alarm indication. (Buzzer will be removed automatically after 15sec.)



※ Notice of Power Failure : If power is turned off and then on again because of power failure or by mistake, first dot will blink.



Quick Start : If you just connect power, it automatically starts incubation with factory setting. [Factory setting : Temperature 35.0°C (95°F), Humidity RH 60%]

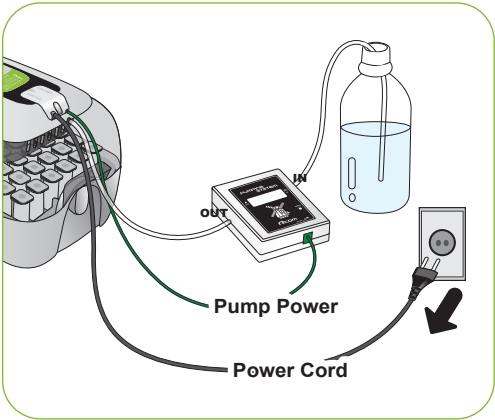


- ▶ Incubator display current temperature and humidity, and it goes to setting conditions within an hour.

※ The artificial intelligence system memorizes and classifies ambient conditions for keeping optimum temperature, and temperature can move up slowly at the first stage.

Incubation Termination

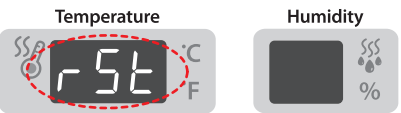
- ▶ There is no specified ON or OFF button on the incubator. Just turn off the power cord after hatching.
- ▶ It is not necessary to do Incubator Initialization with Insect MAX 70 incubator after hatching. Just connect power again when you want to start incubation.




Incubator Initialization

- ▶ This function can be used when user input wrong setting, or incubation termination.
- ▶ Press \ominus and O.K. button at the same time for about 5sec. then display will show "rSt" and incubator returns to default setting.

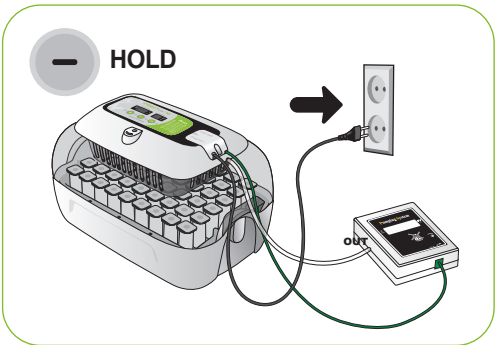
Initialization Display



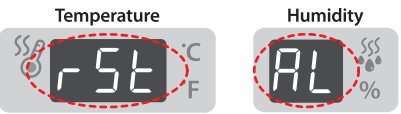
 Calibrated setting value will not be initialized with this function.
[If you need to initialize calibrated setting, refer to FACTORY SETTING next page.]


Return to Factory Setting

- ▶ This function is for return incubator to factory setting.
- ▶ Unplug power cord. Replug during \ominus button is pressed. Then, "rSt AL" will indicated in display, and incubator return to factory setting. [Default setting]



Factory Setting Display



 Calibrated temperature and humidity will also return to factory setting.

Temperature Setting

Tip Function Key

Function	Temp.	Humidity	Abnormal high temp. alarm	Abnormal low temp. alarm	Centigrade / Fahrenheit
Display	tEP	rH	HI	LO	°C / °F
Default Setting	35.0°C	60%	2°C	-3°C	°C

- ▶ Press **+** and **-** button at the same time then “tEP” will be indicated for about 0.5sec. and then temp display will blink.
- ▶ Then, you can adjust temperature with **+** and **-** button. [Default setting: 35°C (95°F)]
- ▶ After setting required temperature, press **O.K** button once then setting will be stored. Next, “rH” will indicated in humidity display for about 0.5 sec. and then humidity display will blink.

※ Just press **O.K** button if you do not need to change setting.

Step 1

Temperature

tEP °C °F

Humidity

60 %

Step 2

Temperature

35.0 °C °F

Humidity

60 %

Humidity Setting

- ▶ From the temperature setting, press **O.K** button once and “rH” (Humidity) will be displayed for 0.5 second and humidity display will blink.
- ▶ When humidity display is blinking, adjust humidity setting with **+** or **-** button. [Default setting : RH 45%]
- ▶ After setting required humidity, press **O.K** button once then setting will be stored. Next, “HI” will be indicated for about 0.5sec.

※ Just press **O.K** button if you do not need to change setting.

Step 3

Temperature

35.0 °C °F

Humidity

rH %

Step 4

Temperature

35.0 °C °F

Humidity

60 %

Tip Insect MAX 70 is available to automatic humidity raise only, if you want to control low humidity level, please adjust "Air Controlling Lever" by manual [refer to page 13]

Tip The temperature and humidity level is optimized according to the international standard at the time of ship ping. It could be recalibrated by the user if the user wishes to do so, but this is not recommended. When in need of adjustment, please refer to our homepage (www.Rcom.co.kr → Information → User Manual Category) or contact the place of purchase. Commercially available thermometer and hygrometers may have drastic measurement deviations, so it is recommended to use thermometer and hygrometer designated for this purpose. [Designated Thermometer and hygrometer – Refer to Rcom Homepage]

4. Function Settings

(2) Temperature Setting&Humidity Setting /
How to Set Abnormal High Temp. Alarm


INSECT 70

How to Set Abnormal High Temperature Alarm

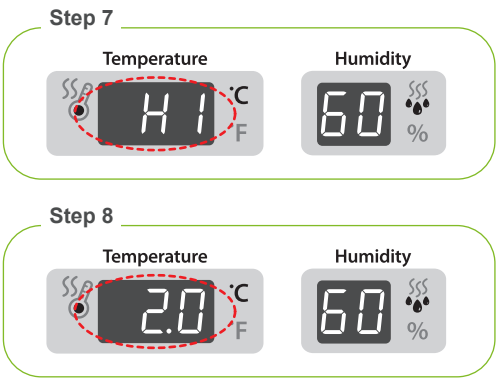
* Max. abnormal temp. alarm limit (0.0 ~ 5.0°C Default Setting:2.0°C)

Tip Abnormal High temperature:
This function gives notice when incubator temperature is higher than setting temperature because of abnormal ambient temperature increase.
When room temperature is higher than incubator temperature, this function works with buzzer. Here, "HI" and temp. gap are displayed alternatively. Press OK button to remove buzzer.

- ▶ From the humidity setting, press the **OK** button once and "HI" (abnormal High temperature alarm) will be displayed for 0.5 second and temperature display will blink.
- ▶ Adjust abnormal high temperature value with **+** or **-** button. [Default setting : 2°C (2°F)]
- ▶ After setting required value, press **OK** button to save. Then, it will go to the next stage, abnormal low temp. setting with display "LO" for about 0.5 sec.

ex :  * It shows that the set temperature value is approximately 3°C (3°F) higher than the Maru incubator's incubation chamber(the Cabinet).

※ Just press **OK** button if you do not need to change setting.




How to Set Abnormal Low Temperature Alarm

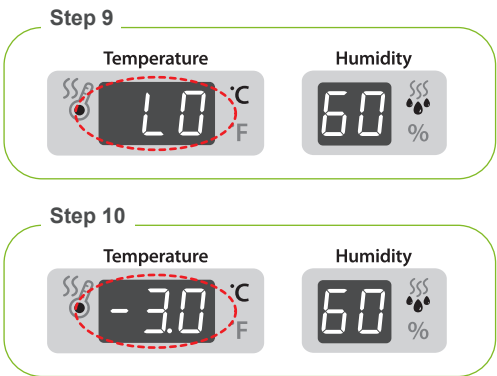
* Min. abnormal temp. alarm limit (0.0 ~ -5.0°C Default Setting:-3.0°C)

- ▶ This function gives notice when incubator temperature is lower than setting temperature because of abnormal ambient temperature decrease.
- ▶ From the Abnormal High Temperature Alarm setting, press the **OK** button once and "LO" (abnormal Low temp. alarm) will be displayed for 0.5 second and the temperature display will blink.
- ▶ Adjust abnormal low temp. setting with **+** or **-** button. [Default Value: -3°C (-3°F)]
- ▶ After setting required value, press **OK** button to save. Then, it will go to the next stage, °C & °F change.

Tip Abnormal Low Temperature: "LO" will indicated on LCD.
(The others, same with abnormal high temp. alarm function.)

ex :  * It shows that the set temperature is 2°C (2°F) lower than the actual cabinet temperature of the machine.

※ Just press **OK** button if you do not need to change setting.



How to change Centigrade & Fahrenheit

- ▶ From the abnormal LOW temperature alarm setting, press **(O.K)** button once and “C.F” (Celsius/Fahrenheit) will be displayed for 0.5 second and LED for “C” will blink.
- ▶ Select °C or °F with **(+)** or **(-)** button.
- ▶ After selecting °C or °F , press **(O.K)** button to save.
[Default setting : °C]

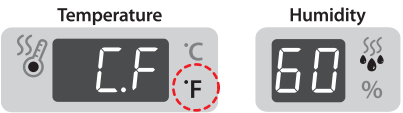
Tip °C = 5/9 (°F - 32)

※ Just press **(O.K)** button if you do not need to change setting.

Step 11



Step 12

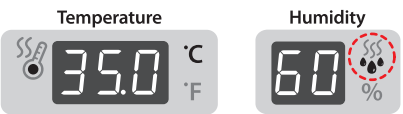


How to Work Automatic Pumping System(APS) by Force

- ▶ Press **(+)** button for about 5sec. during incubation process. Then, PUMP will operate by force with LED light on.
- ▶ Press **(+)** button for about 10sec. then pump motor works for 2min. by force. It still works for 2min. even if you remove your finger from the button.

Tip If you press **(+)** button for about 10sec. pump will operate for about 2min. Press any key to remove.

APS by Force



5. Management

(1) How to Disassemble and Clean the Incubator

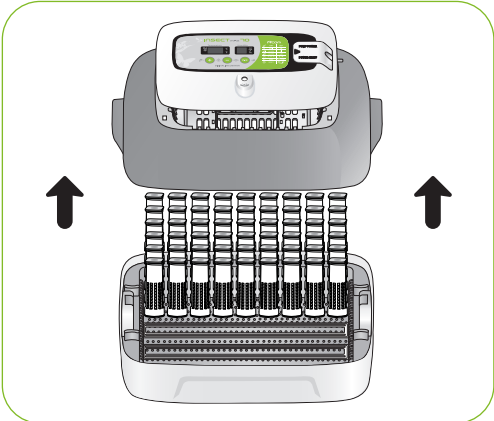
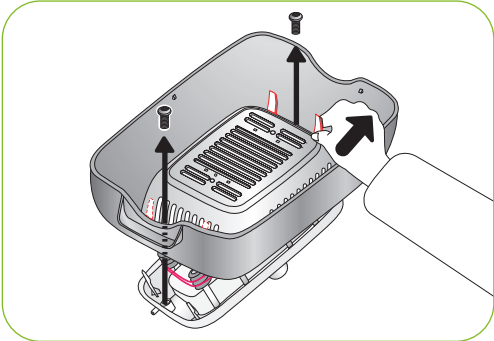
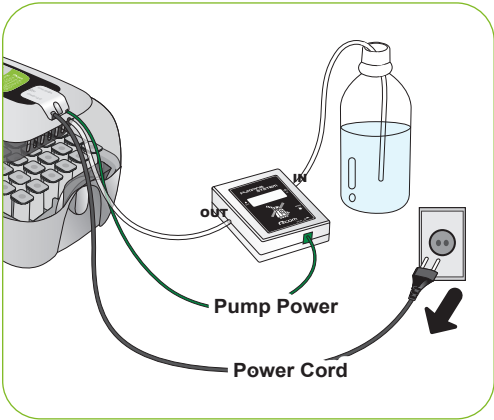
INSECT 70

How to Disassemble and Clean the Incubator

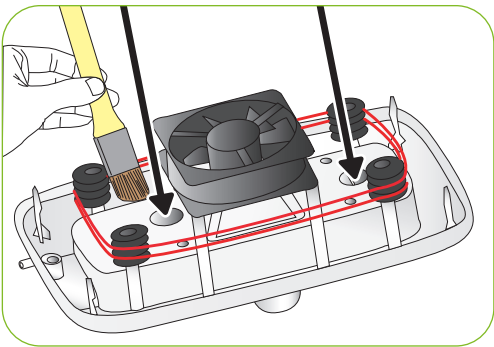
 Be sure to take off power cord before cleaning the incubator.

- ▶ After incubation terminated, never leave the incubator covered with view window. Moisture inside of the incubator vaporizes and it can stick to electric parts causing operation failure. Be sure to dry the incubator perfectly.

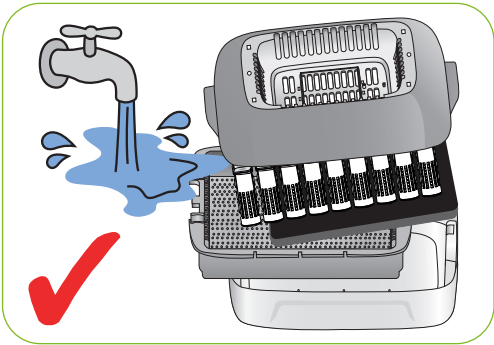
- ▶ Remove main controller from view window. [Refer to the page 9]



- ▶ Wipe the main controller smoothly with soft brush. Be careful not to give impact to sensor part or heating part.
- ▶ Temp. & Humidity sensor is assembled with connector for easy replacement in case of trouble.



- ▶ Wash the window, tray, tray hatching pad, insect house and main body(bottom) with warm water.



- ▶ Do not wash Automatic Pumping- System(APS) with water, just wipe with a soft cloth.

 Do not use benzene or thinner when wipe the unit. It can cause transformation or decoloration.



- ▶ Wipe the exterior with a soft cloth, and completely dry before storing.



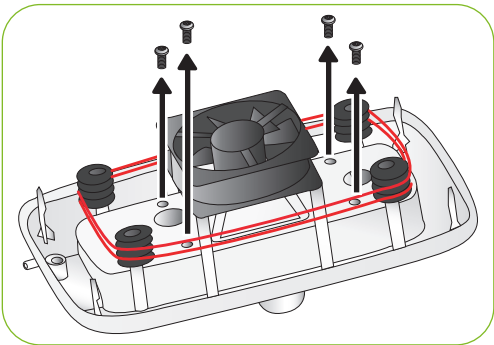
6. Product Information

(1) How to Replace the Fuse

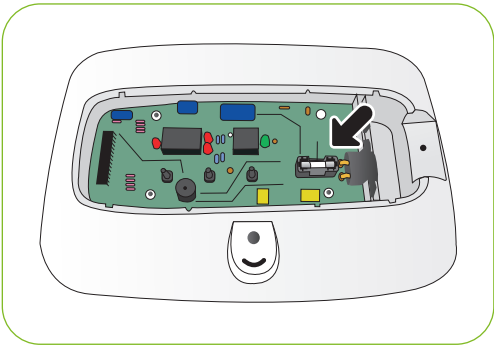
INSECT 70

How to Replace the Fuse

- ▶ If power does not turn on even if you connect the plug, check fuse.



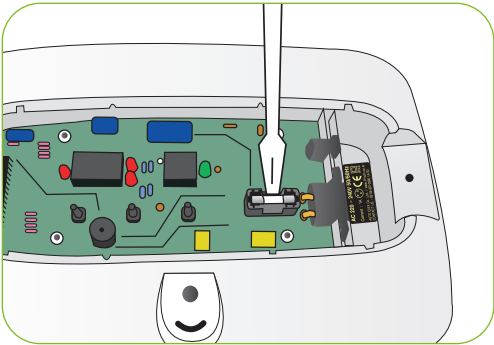
- ▶ Open the cover as Fig. then you can see fuse equipped PCB. Remove damaged fuse with screwdriver.



- ▶ Replace with new fuse.
(250V 2.0A Ø5*20mm)

- ▶ Reassemble with the opposite order of disassemble.

※ If the cover is not completely closed, moisture preventing ring will not attached correctly and moisture can be flow in to the PCB part.



Troubleshooting


Circumstance	Items to be confirmed	Solutions
No signs of power to the incubator.	<ul style="list-style-type: none">▶ Check electric cord is properly connected.▶ Check if there is a power outage.▶ Check whether the plug is damaged.▶ Check the fuse is not blown. [Refer to the page 22]	<ul style="list-style-type: none">▶ Connect the cord again.▶ Check the main socket with any other electric appliances.▶ Try to insert to another outlet.▶ Replace the spare fuse in the fuse box. (250V 2.0A)
When temperature is too high / When temperature is too low	<ul style="list-style-type: none">▶ Check your setting temperature.▶ Check the air circulation FAN is working.▶ Initialize the incubator. [Refer to the page 16]	<ul style="list-style-type: none">▶ Set the temperature as required.▶ Take the power plug out of the outlet, and disassemble the main body for cleaning around the air circulation fan with brush.
When humidity is too high / When humidity is too low	<ul style="list-style-type: none">▶ Check water is enough.▶ Check setting humidity.▶ Initialize the incubator. [Refer to the page 16] <When Low> <ul style="list-style-type: none">▶ Check if evaporating pad is fit well.▶ Check if view window is closed completely. <When High> <ul style="list-style-type: none">▶ Check ambient conditions.▶ Check if there is water in bottom body.	<ul style="list-style-type: none">▶ Supply water.▶ Set required humidity. <When Low> <ul style="list-style-type: none">▶ If evaporating pad does not fit well, humidification device will not work well.▶ Close view window exactly. <When High> <ul style="list-style-type: none">▶ Adjust the conditions of room temperature [Refer to the page 8]▶ Remover water inside of bottom body.
The machine makes some noise. - A little noisy occurs from the inside of circulation fan.	<ul style="list-style-type: none">▶ Check whether you put anything on the incubator.▶ Check if there is any vibration, or check the incubator set on a table.▶ Check if there is any hatching debris such as feather or eggs-shell in the incubator FAN.	<ul style="list-style-type: none">▶ Ensure the incubator is not touching any other items and nothing is on top of the unit.▶ Move the incubator to a flat and even surface.▶ Unplug the power supply and disassemble the main body for cleaning the egg turning tray and gear.
Dew forms in the incubator. - Dew condensation is normal with high humidity incubation.	<ul style="list-style-type: none">▶ Check if incubation room temperature is too low.	<ul style="list-style-type: none">▶ Check conditions of incubation room, and adjust as required.
When pumping is slow	<ul style="list-style-type: none">▶ Check Silicon Tube	<ul style="list-style-type: none">▶ Adjust APS speed hole with screw driver.

 Test the incubator to be sure that the incubator works without any problem before placing eggs in the incubator. Please ensure you remember how to use the machine and maybe re-read instructions.

Specification

1-1 Name : Rcom Insect MAX 70
1-2 Model : MX-N70

Power	AC 100[V]~120[V], 50/60[Hz] / AC 220[V]~240[V], 50/60[Hz]
Power Consumption	Average 25[W] Max. 48[W]
Temp. limits	20 ~ 42[°C] / 68 ~ 107.6[°F]
Humidity Limits	20[%] ~ 70[%] (It can be changed according to the conditions)
Weight	2.4[Kg]
Size	(W)370×(L)231×(H)209[mm]
Fuse Standard	250[V] 2.0[A] (Ø5*20[mm])

-  You will be asking for service charge if you are in below cases.
1. Broken or Problem caused by 'No cleaning' or 'Improper handling'
 2. Broken or problem caused by 'Not using distilled water'
 3. Broken or problem caused by 'Trying Bird hatching in incubator'
(Please don't try bird hatching in incubator. Please use Hatcher during bird hatching.)
 4. Broken or problem caused by 'Wrong controlling(Using)'
 5. Broken or Problem caused by using the machine out of User's Manual.
 6. Broken or problem caused by 'Customer's mistake or fault'

- ※ Register your product Serial No. on our website for free 2 years gurantee.
※ Refer to website for how to register. (Free 1 years gurantee in case not registerd.)

- ※ Product Registration Procedures
If you are a new member of Rcom, you need to log in our website
1. Click "SIGN UP" on top of the right corner.
 2. Fill out the information on the blanks.

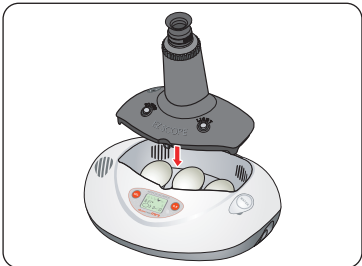
If you already registered your information on the Rcom website, please log in

1. Click "Login" on top of the right corner.
2. Select "Customer" and click "Register Products".
3. Fill out the information on the blanks.

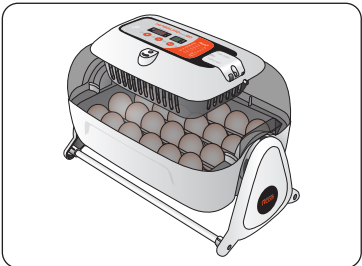
You will need below information to register on our website.

1. Your name
2. Your (home/company) address & Email address, country
3. Your product(model) name & Serial number
4. Date of purchase & Name of purchased shop you bought from

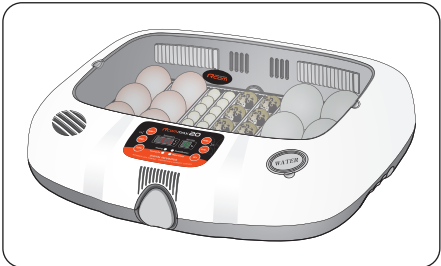
Rcom Incubator Series



Rcom PRO MINI (PX-03)



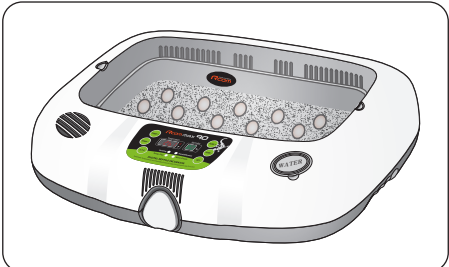
Rcom KINGSURO MAX 20 (MX-SURO)



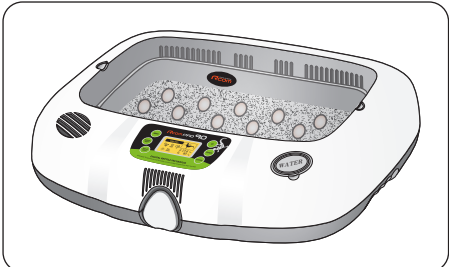
Rcom MAX 20 (MX-20)



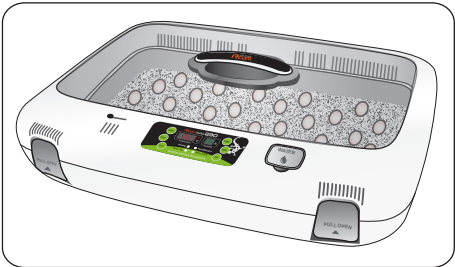
Rcom PRO 50 (PX-50)



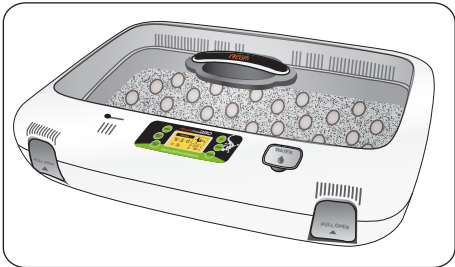
Rcom REPTILE MAX 90 (MX-R90)



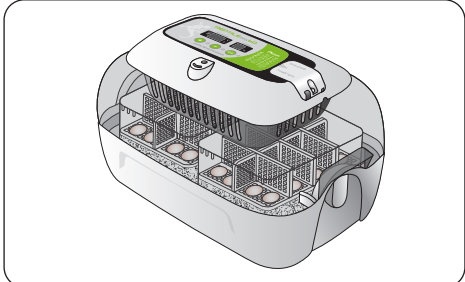
Rcom REPTILE PRO 90 (PX-R90)



Rcom REPTILE MAX 230 (MX-R230)



Rcom REPTILE MAX 230 (PX-R230)



Rcom REPTILE MAX 60 (MX-R60)



Rcom DIGILOG (PX-V1)



Rcom DIGILOG2 (PX-V2)

Rcom is designed for user's easy and convenient use.
It can be changed without notice for improvement in performance,
design,treatment, and software, etc.



<https://www.R-com-hatcher.com>



North America Sales & Service

<https://www.r-com-hatcher.com>

MANUFACTURER

AUTOELEX CO.,LTD.

● OFFICE : 218, Sangdong-ro, Sangdong-myeon,
Gimhae-si, Gyeongsangnam-do, 50805 Korea

Rcom is the Best Design with High Quality, Value, and Performance!